

Enjoy Birds More

Wind Generator
(A42)



User Guide

1. Introduction

Thank you for purchasing one of the Enjoy Birds More family of products. We hope you will enjoy many years of use from this advanced equipment.

This Solar Panel is designed to be used with the Electronic Battery Box or Daylight Sensing Battery Box from our range of products. These battery boxes are a standard part of the following products:

Garden Nest Box
Wildlife Camera
Town Garden Nesting Package
Wildlife Camera Package and
Solar Nesting Package

Each of these products can take up to 2 Solar Panels or Wind Generators.

2. Assembly of Your Wind Generator

Please refer to the diagrams below and the Part List reference numbers.

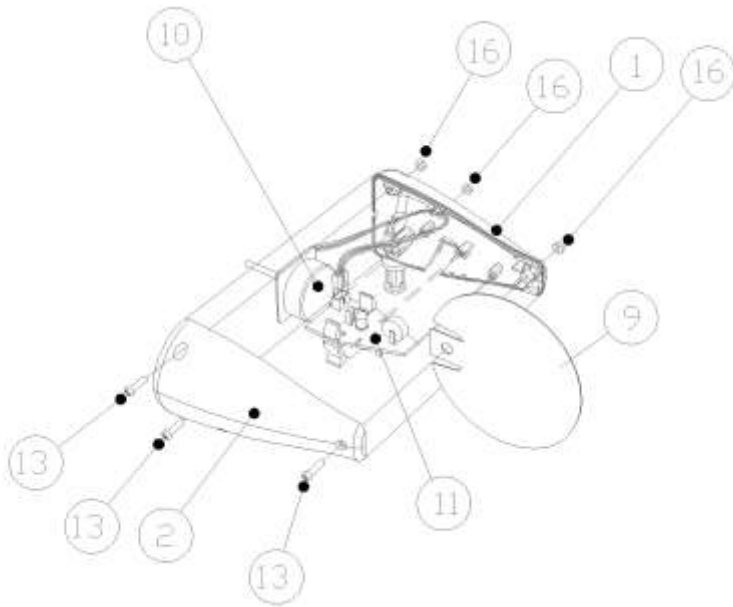
<u>Part List</u>	
1	Left Housing
2	Right Housing
3	Blade Head
4	Blade Base
7	Aluminium Tube
8	Polypropylene Blade
9	Polypropylene Vane
10	Generator
11	Printed Circuit Board Assembly
13	Screw, M2.6 x 10 mm
14	Screw, M2.6 x 18 mm
15	Screw, M3 x 2 mm
16	Hex Nut, M2.6

2.1 Main Body Assembly

Plug the connector of the generator (10) to the socket on the Printed Circuit Board Assembly (11).

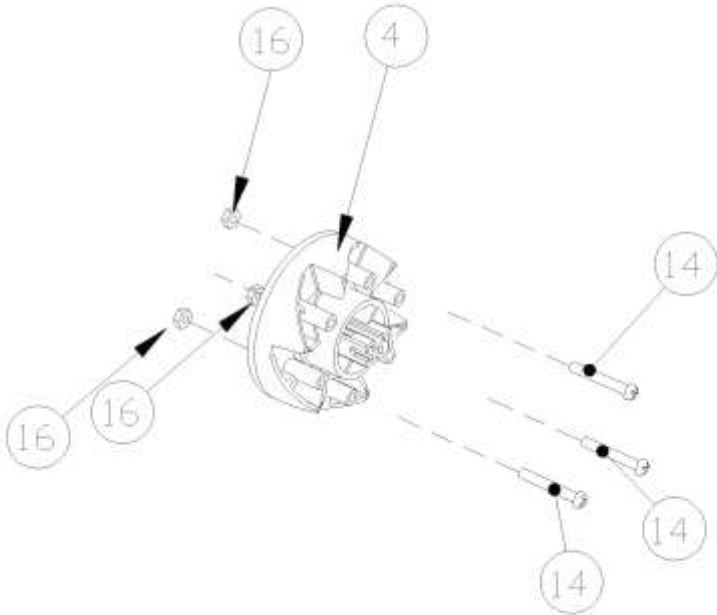
Install the Generator (10), Printed Circuit Board Assembly (11) and the Vane (9) in the Main Body Housing (1 & 2).

Secure the assembly with screws (13) and nuts (16) as shown in the diagram. You may press the 3 nuts (16) to the Left Housing (1) first with the help of the long screw (14).



2.2 Blade Base Nut Installation

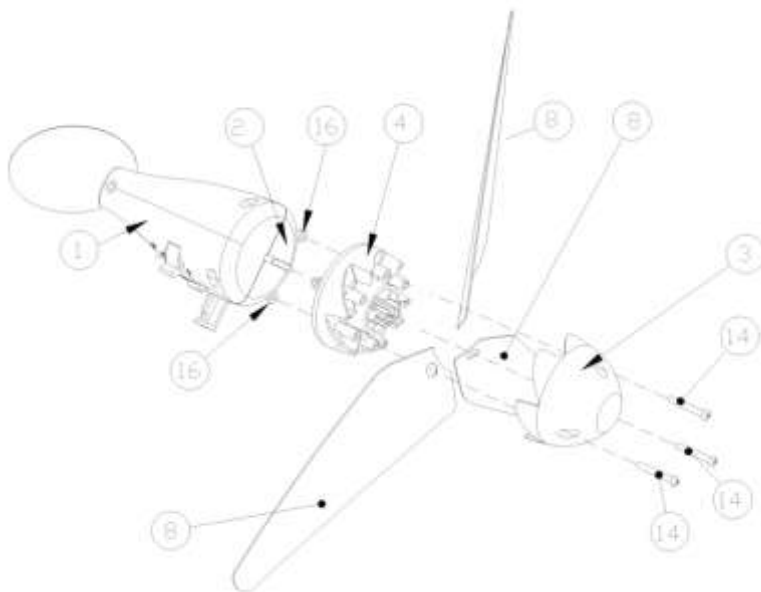
Securely fit 3 nuts (16) to alternate nut holders on the Blade Base (4) by screwing the screw (14) all the way in. This will pull the nuts into position so that they are held securely. Unscrew and remove screw 14, taking care to leave the nuts in place.



2.3 Blade Assembly

Fit the Blades (8) onto 3 of the 6 pillars on the Blade Head (4), selecting those pillars opposite the nuts fitted in section 2.2 above.

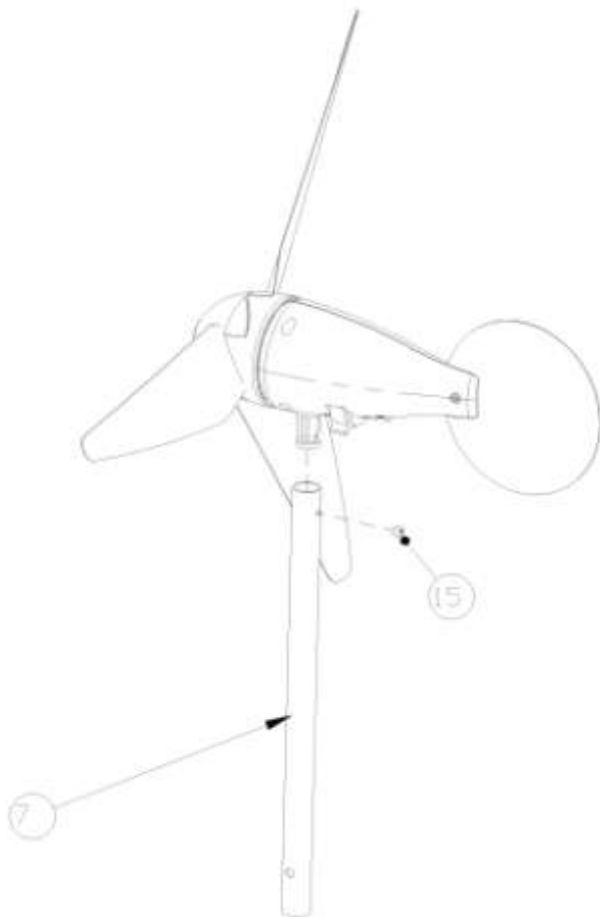
Fit the Blade Head (3) onto the Blade Base (4) and make sure the 3 holes on the Blade Head align with the holes with nuts installed on the Blade Base. Fit 3 screws (14) through the holes on the Blade Head. Secure the screws by turning the screws clockwise. Do not push hard on the screw while you are turning, otherwise the nut may be pushed off its location.



Push the Blade Assembly gently but firmly onto the spindle at the front of the Main Body Assembly.

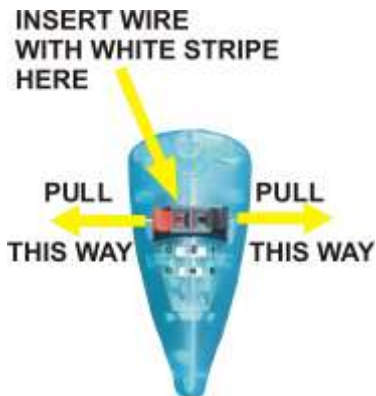
2.4 Post and Support Assembly

Install the Body Assembly on the top of the Aluminium Tube and secure it with the screw (15).



3. Connection of Your Wind Generator to the Battery

The 2.5 metre long cable has a socket at one end for connection to your Battery Box, and 2 bare wires at the other end, for connection to your Wind Generator.



Fit these 2 bare wires into the red and black spring connectors on the base of the generator body, the wire marked with a white stripe onto the red connector. To open the connector, gently pull the red or black handle to the side, against resistance of a spring. Once open, release the handle and it will grip the wire.

Plug the connector at the other end of the cable gently into one of the white connectors on the circuit board in the battery box, taking care not to put any undue stress on the circuit board (particularly when shutting the lid of the battery box).



Carefully position the cable in the battery box to come out through the cable slot, without putting any undue strain on the circuit board when the lid is shut.

Ensure that the battery box is equipped with rechargeable batteries, such as our products Rechargeable High Capacity Battery Set (A40).

4. Positioning of Wind Generator for Operation

The Wind Generator is designed to be placed in a reasonably exposed position to catch the wind. The short post may be fitted onto a longer post or mast either using cable ties (such as those enclosed), or by screwing or clamping.

When fitting to a separate post, please be careful that the blades are unable to hit the separate post (they flex somewhat in high winds), whichever way the generator is facing.

With the battery box positioned relative to the nest box or camera, find a position for the generator so that it is in an open (and exposed to the wind) position, and so that the cable hangs free from it and does not obstruct its ability to swivel into the direction of the wind.

5. Operation of Wind Generator

The aluminium support tube should be approximately vertical, and the generator free to swivel to capture the wind energy.

The vane will point it into the wind.

Please note that the rotor is designed to start rotating at a wind speed of approximately 3.5 mph (2 m/s). Depending on the state of charge of the batteries, it will start charging them once it reaches a speed of approximately 1800 rpm which should be achieved by a wind speed of approximately 15 mph (7 m/s).

Warning

Keep your hands and your body away from the blades (when rotating) to avoid injury.

This product contains small parts. It is not suitable for children under 3 years old.

6. Specifications, Warranty etc

The specifications of the product described and the contents of this User Guide are subject to change without notice, as part of our continuous improvement process.

Whilst every care has been taken in the preparation of this document, we realise that it may still be possible to improve it. If you find any errors, omissions or points which are not clear, please let us know by email at user.guide@enjoybirdsmore.co.uk. We will endeavour to deal with the problem to your satisfaction, and learn from it for future versions.

The contents of this document may not be reproduced in whole or in part except for your personal use.

Enjoy Birds More Limited warrants all its products against defects in materials and manufacture for 6 months from the date of purchase. If a defect is discovered, Enjoy Birds More will repair or replace the product (at its option) free of charge, provided it is returned to the address in this User Guide at the customer's expense.

Enjoy Birds More Limited is not able to accept any responsibility for any loss, damage, or loss of data suffered by any customer or third party as a result of use, misuse or malfunction of the product or this User Guide. In particular, whilst the product has been extensively tested, we are unable to warrant that is error free.

If you have any further technical or user questions relating to the product, please first check the Frequently Asked Questions section of our Web Site, www.enjoybirdsmore.co.uk. If that does not enable you to resolve your query, please email it to us on customer.service@enjoybirdsmore.co.uk.

From time to time, we provide customers with product updates. Please check the web site for details.

7. Care for the Environment

As you might expect, Enjoy Birds More cares deeply about the Environment. We have adopted an Environmental Policy designed to demonstrate our commitment to operating our business in harmony with the natural and man made environments. If you wish to see the full policy, it is available to read on our web site.

Our products are developed to be economical with natural resources, both in manufacture and use. We comply with the relevant laws and regulations, including those relating to the Restriction of Hazardous Substances (known as RoHS) and Waste Electronic and Electrical Equipment (WEEE).

The wood used in our products comes from responsibly managed forests, as part of our commitment to the Forest Stewardship Council.

The plastic roof and diffuser in your battery box are made from Polypropylene. This is regarded by many as the most environmentally friendly plastic available: it requires relatively low energy in manufacture and is so safe it is commonly used in toys, toothbrushes and food packaging. When recycled by incineration, no toxic substances are released, only water and Carbon Dioxide.

When you have finished using this product, please dispose of it responsibly. We would suggest using your local household recycling and waste treatment facility, particularly for the electronic parts of the product.

Certain of our products are marked with the following symbol:



This denotes that they require to be disposed of at end of their useful life by the local waste treatment facility. Please follow this instruction.

This User Guide is printed on recycled paper.

8. Accessories for Your Enjoy Birds More products

Our comprehensive range of accessories is designed to enable customers to make the best use of their purchase. Why not accessorise your equipment to extend its capabilities and make it do exactly what you want? The following accessories may be of interest:

Battery to Camera Extension Cable (A33)

Extend the distance between your Battery Box and Camera or Nest Box

Mains to Battery Extension Cable (A35)

Want to use mains power, but need a longer cable from the mains power unit to your battery box ? This is what you need.

Enjoy Birds More by PC (A36)

Our very own software package for users of camera nest boxes and wild-life cameras - view, take and archive your pictures, videos and timelapse sequences.

Video to USB Converter (A37)

This small converter allows you to feed pictures from your camera straight into your computer. No need to install any hardware inside the computer.

PC Video Viewer (A38)

All the hardware and software you need to feed your nest and wildlife pictures into a PC or laptop.

Rechargeable High Capacity Battery Set (A40)

8 high capacity rechargeable batteries and mains charger. Last for longer between charges.

Solar Panel (A41)

Free energy direct from the sun to recharge for your camera. Good looking and efficient.

Universal Camera Stand (A45)

This stand allows the positioning of your camera just where you want it, at any height from under water to 2.2 metres high. Separate wand to hold camera for pond dipping etc.

Network Server (A50)

Allows connection of any of our cameras or camera nest boxes straight into a computer network, so that the pictures can be viewed from any computer on the network or the Internet.

Enjoy Birds More

Did you know we produce a Variety of Wireless Camera Nest Boxes, and Wildlife Cameras and Accessories? Some of our products:

Garden Nest Box (B2)

The ultimate Wireless Camera Nest Box, with a battery life up to 7 months, and bristling with innovations. Easy and Quick to set up. Remote Electronic Battery Box takes alkaline or rechargeable batteries, and is already equipped with charger to utilise solar or wind energy

Eco Nest Box (B1)

A full function Wireless Camera Nest Box, but with simpler electronics. Translucent window gives colour pictures in daylight, while infra red lights give pictures at night. Mains or battery operation

Town Garden Nesting Package (P80)

Includes Garden Nest Box with all you need to watch by computer

Solar Nesting Package (P82)

The ultimate package for the environmentally conscious, with all you need to watch by computer and power by renewable energy

Wildlife Camera Package (P83)

Camera, stand and computer connection makes you ready to start viewing the wildlife immediately

Specialist Boxes:

Other specialised boxes and special requirements made to individual order.

To order, or for more details of all our products:

Visit us at www.enjoybirdsmore.co.uk,

Email us at mail@enjoybirdsmore.co.uk

Or telephone us at +44 (0) 1675 442544

Enjoy Birds More Limited
Eastcote House
Barston Lane
Eastcote
Solihull
West Midlands
B92 0HS UK

Telephone: +44 (0) 1675 442544
Fax: +44 (0) 1675 442421
Text (SMS): +44 (0) 1675 442544
Web site: www.enjoybirdsmore.co.uk
Email: mail@enjoybirdsmore.co.uk

This publication, our products and our designs are
© Copyright 2008 Enjoy Birds More Limited
and protected by Patent Pending 0424839.9

FSC
Trademark
© 1996
Forest
Stewardship
Council AC



Responsible
Forest
Management

SA-COC-001654-EK



All our products are tested
for compliance with the
relevant directives, and carry
the CE Mark



Finalist
2004